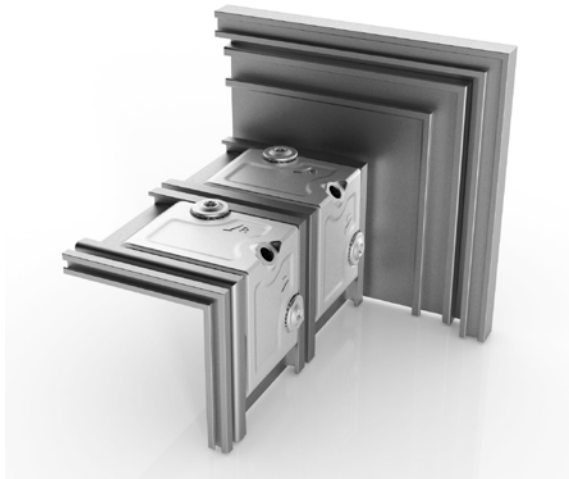


MARMOLADA EDGE EXT



**The quickest one
for open profiles**

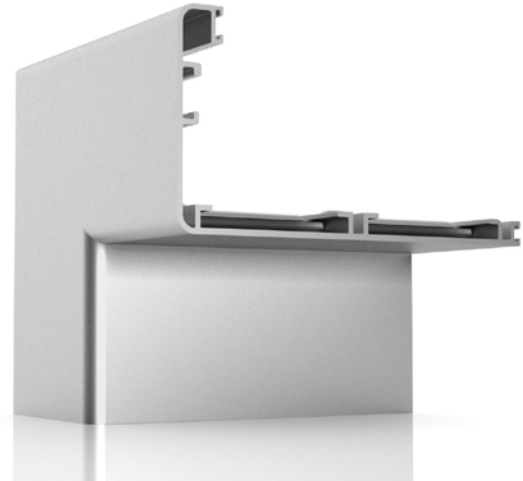
MARMOLADA EDGE EXT



External corner joint for open profiles in die-cast aluminium, mostly used for the tightening and alignment of door frames.

It can be installed without any processing. It has specific glue channels to guarantee perfect sealing and greater strength while avoiding any waste or spill.

Patented.



+ Secure and align without profile deformation

+ No profile processing